

Konu: Error reporting wrong line numbers bug in NASM v2.15

Kimden: Erdogan Tan <erdogantan@singlix.com>

Tarih: 06.02.2022 20:15

Kime: gorcunov@gmail.com

BCC: hpa@zytor.com

Good evening

For a long time I am using NASM for compiling/sembling my retro unix 386 kernel (a derivation of PDP-11 unix v1)

When asm source code of main source file (unix386.s) or included files (u1.s, u2.s etc.) has an syntax error or label error,

NASM gives wrong error line numbers when i use NASM v2.15 to assemble source code.

But if I use NASM v2.11 it gives correct error line numbers of source code files.

(I have tested 32 bit and 64 bit NASM v2.15 both are giving wrong line numbers..)

Assembling is successful as builging retro unix kernel (v1.0, 1.1 and v1.2) and running operating system..

(all of files are assembled via NASM)

Kernel source code is flat (not segmented) 32 bit (80836 registers, protected mode) code starts from offset 0 (org 0) and it has a bss (unitialzided data) section at the end.

Defined structure and data (files) are included after included code (files). ((Also gives label address/location errors in bss section if i put -include-

sstructure definions in bss section before bss labels of relevant structure. But error line numbers bug is a separate and important bug because

there is a bad written error-line reporting code in NASM v2.15. But NASM 2.11 thas not got this bug!)

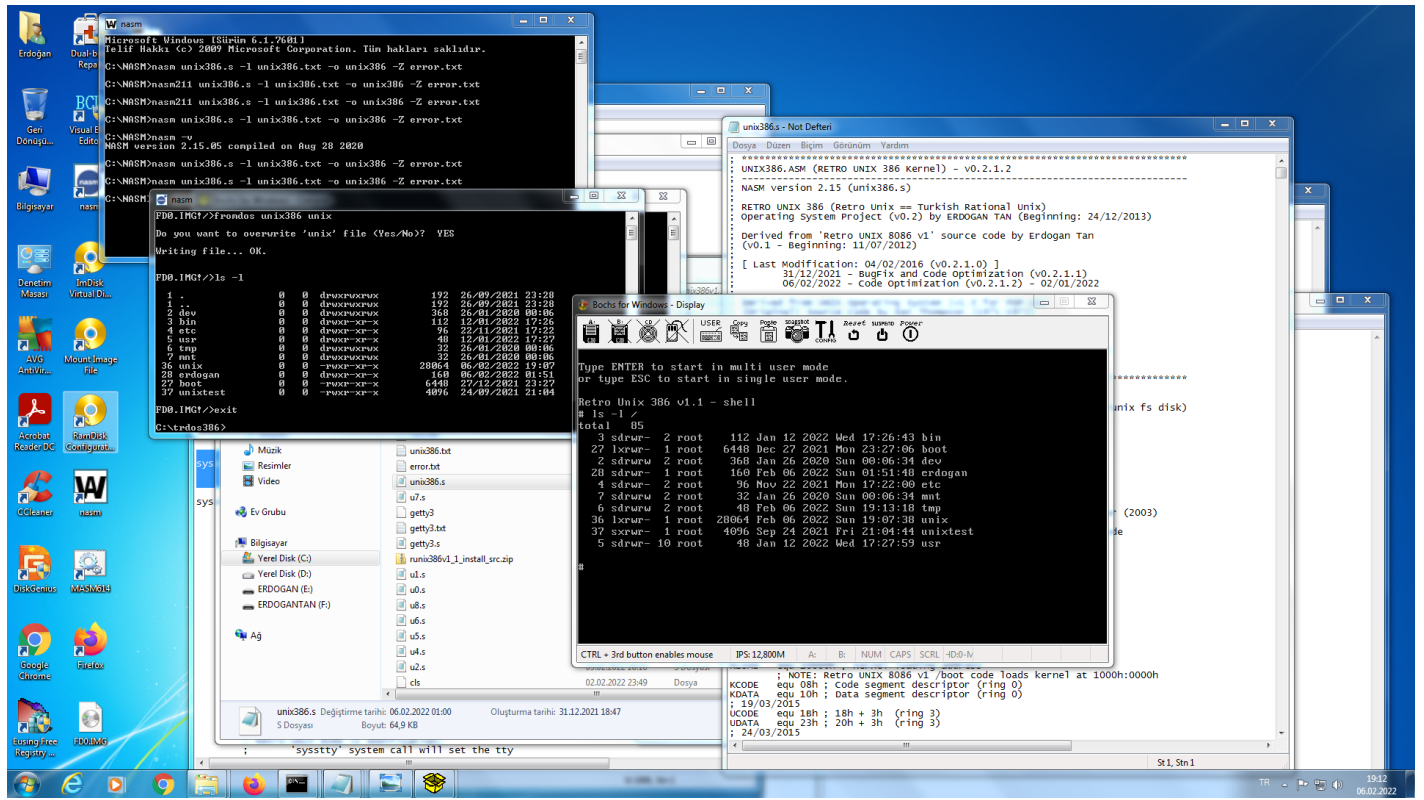
here is screenshots (the first one shows the BUG, others shows the work which i am using NASM for it.)

Error reporting wrong line numbers bug in NASM v2.15

The screenshot displays a Windows desktop environment with several open windows related to the development of the Retro UNIX 386 v1.2 kernel. The desktop background is blue with various icons for applications and utilities.

Key windows and their content include:

- Command Prompt (NASM):** Shows the compilation process using NASM v2.15.05. The command is `C:\NASM\nasm -v`, which outputs `NASM version 2.15.05 compiled on Aug 28 2020`.
- error.txt - Not Defini:** Displays assembly error messages, such as `u1.s:2214: error: symbol 'sysstty_err' undefined` and `u2.s:3194: warning: byte data exceeds bounds [-wnumber-overflow]`.
- File Explorer:** Shows the project directory structure, including files like `error.txt`, `unix386.s`, `u2.s`, and `u1.s`.
- File Manager (unix386.s):** Shows the contents of the `unix386.s` file, including assembly code for system calls like `sysstty`.
- Bochs for Windows - Display:** Shows the kernel boot process, displaying memory statistics: `Total memory: 33554432 bytes, 8192 pages` and `Free memory: 32464896 bytes, 7926 pages`.
- sysstty:** Shows the output of the `sysstty` system call, indicating that the system call will set the tty.



Regards

Erdogan Tan

(Istanbul, Turkey)

Retro UNIX 386 Source code (written for NASM) : <https://www.singlix.com/runix/files.html>